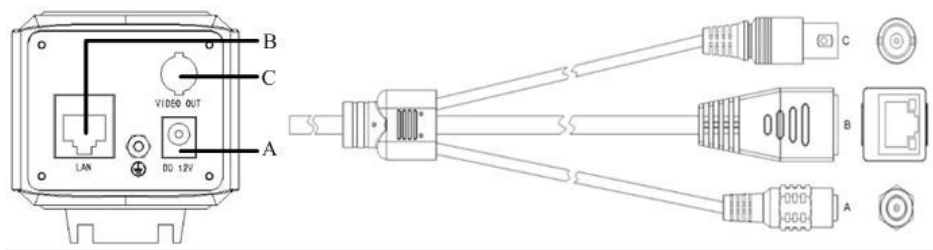


This document is the Quick Start guide, For more information, please refer to the user manual.

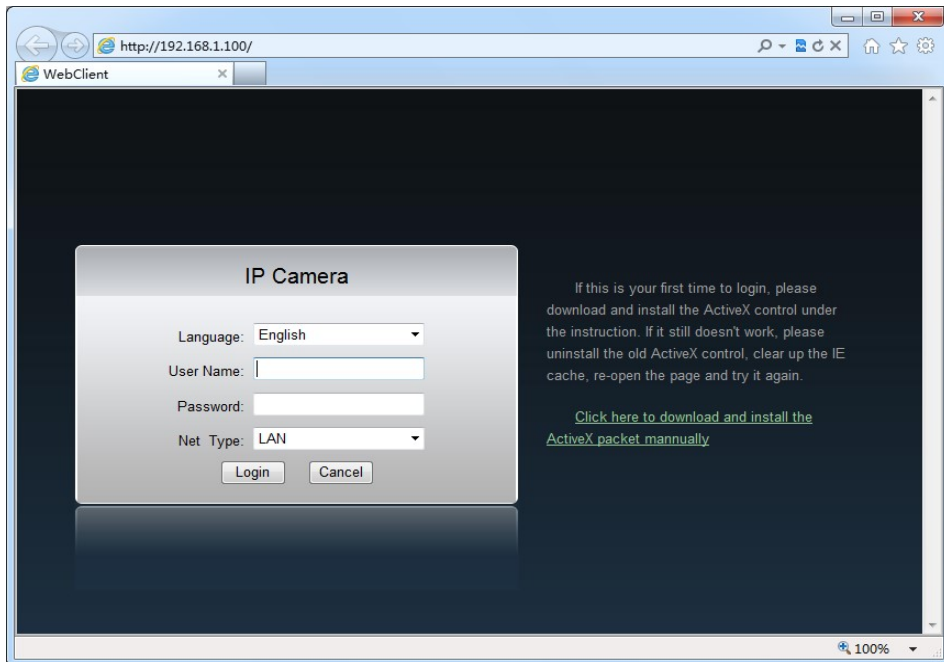
Network camera interface



Interface Description:

Number	Interface	Explanation
A	DC12V	12V DC power supply
B	LAN	Standard network RJ45 interface
C	VIDEO OUT	Analog video output interface, standard BNC connector

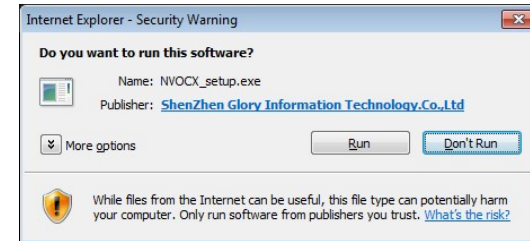
Login equipment



Note: Your computer must be in the same network address range and IP Camera to communicate, so you may need to change the IP address of the computer to log on to the server.

Input **http:// Ip address** into the login page. The factory default IP address:192.168.1.100.

First login you will be prompted to install the OCX, as shown below. Click Run> button, install the OCX before normal use.



Installation is complete, refresh the IE and enter the username and password to log into the preview interface.

! The factory default user name and password are admin and admin, please change the administrator password after login.

IE Preview interface

