

QUICK START GUIDE FOR AHD / DVR &XVR

This product is an excellent digital surveillance equipment with high definition designed specifically for the field of security. Embedded LINUX operating system, making the system more stable; using standard H.264MP video compression algorithms and a unique spatial and temporal filtering algorithm to achieve a high-quality, low bit-rate synchronous audio and video surveillance; powerful network services greatly enhance the ability of network data transmission and remote control capabilities.

Part One Basic Operation

1 . Basic Installation

1.1. Hard-Disk Installation

Install Hard-disk if AHD / DVR &XVR first-time used. (Remarks: Hard-disk capacity please refer to each DVR specifications; AHD / DVR &XVR without Hard-disk still supports monitoring, but no recording or playback)

1.2. Mouse Connection

There are 2 USB ports with the device. These 2 USB ports could be used for mouse, U disk and WIFI module. Mouse connection is depend on products specifications based on different products.

1.3. Start up

Plug the power supply and turn on the power supply switch. Power supply indicator light shining indicates turning on the video recorder. After finishing the start up you will hear a beep, and the default setting of video output is multiple-window output mode.

Remark: Restart the power after the abnormal power off, AHD / DVR &XVR will automatically recover the state before power off.

1.4. Turn off

Two ways to turn off AHD / DVR &XVR: 1.)shut down via software: enter **【Main Menu】> 【Log out】> 【Turn Off the system】** ; 2.) Turn off the power switch in back-panel. (Attention: turn off power switch directly may cause data loss)

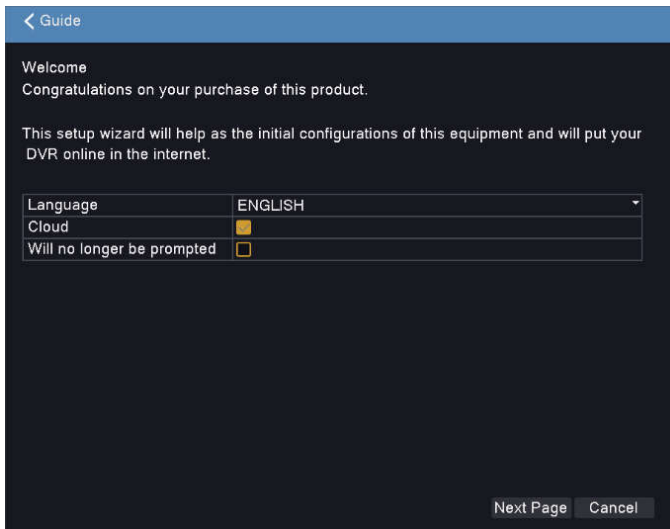


Remark: The setting information must be saved before replacing the battery otherwise information will lose.

1.5. Login

When the AHD / DVR &XVR boots up, user must login and the system provides the corresponding functions with the user purview. There are two user settings which are admin and guest, and the password is admin .“admin” is the super user purview; “guest” is the common user purview which have right to preview and recording playback. User “admin” and “guest” can change the password, but can’t change the right 是.

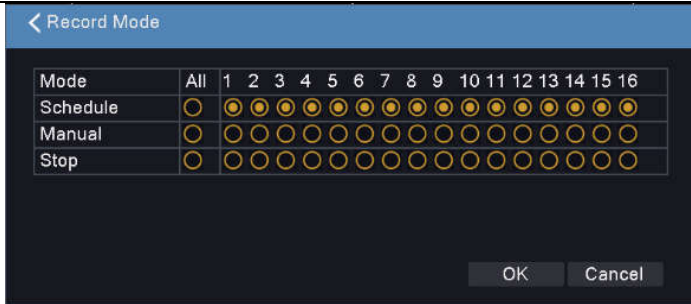
Password protection: If the password is continuous wrong seven times, the alarm will start. (Through reboot or after half an hour, the account will be unlocked automatically) For your system security, please modify your password in “User management” after first login.



2 . Record Mode and Playback

2.1. Record Mode

【Preview Window】 > 【Mouse Right Button Menu】 > 【Record Mode】 :




[Schedule]: Record as schedule. You need to set record types and time periods.

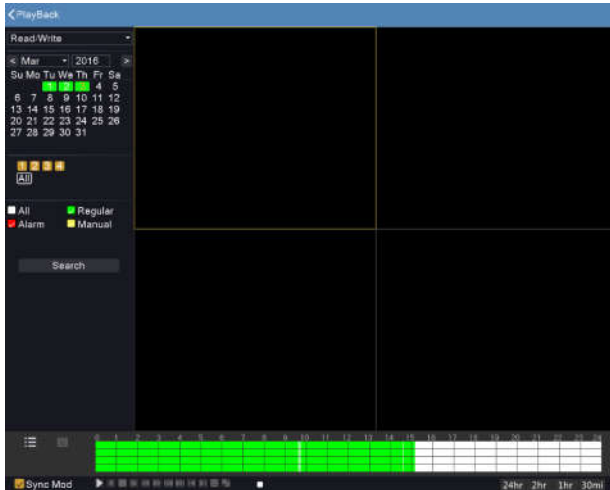
[Manual]: Manual record, record all the time unless “stop”.

[Stop] : Stop recording all the time.

Remark: Priority levels: [Manual] = [Stop] > [Schedule]

2.2. Video Playback

- Two ways to playback video: 1.) Preview Window -> Mouse Right Button -> Record Playback;
 2.) Main Menu—Record Playback: select date & time & channel -> click **Search** to search related video
 -> click  to playback the video, or click the time bar below to playback video directly.



3 . Network Setting

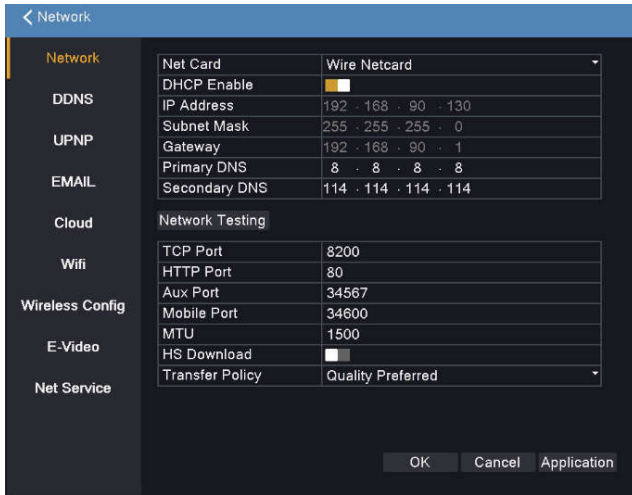
[Main Menu] > [Network] to set network:

[IP address] Default: 192.168.1.18 ;

[Subnet Mask] Default: 255.255.255.0 ;

【Default gateway】 Default: 192.168.1.1.

Remark: IP Address of AHD / DVR &XVR and router should be at the same network segment.

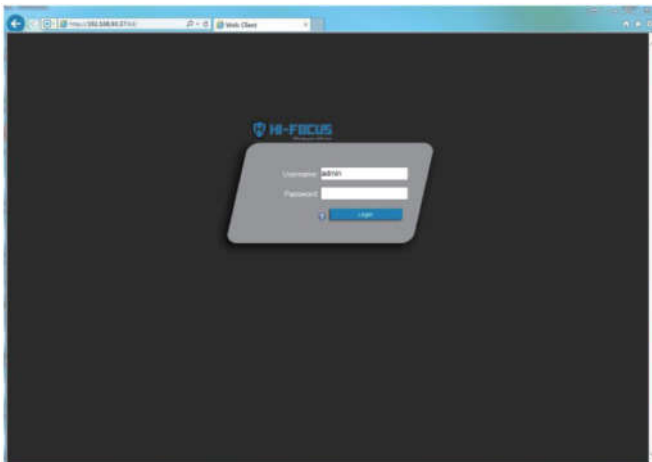


Part Two Remote Operation

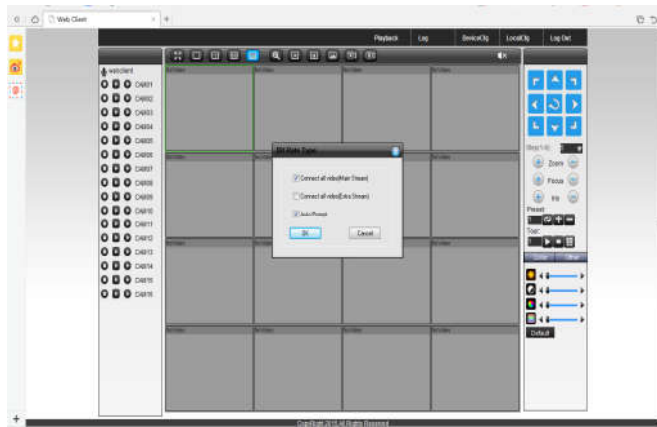
1. Web Remote Access

1.1 Web Login (IE browser)

Input AHD / DVR &XVR IP address in address bar (install plug-in Active-X control needed if first time used), input User Name & Password (default user name is admin, and password is admin)



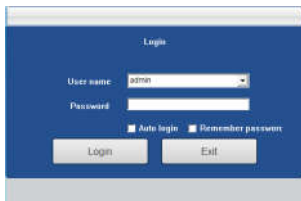
Web login interface



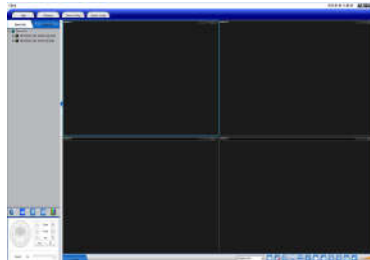
Web main interface

2. CMS Remote Access

CMS software is installed in computer for remote access. Input User name and Password (User name is admin, password is blank)



Login interface



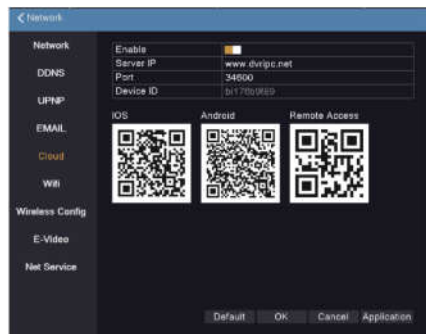
Main interface


3. Mobile Phone Monitoring

Mobile app name: **HIFOCUS HD**

Port: **34600**

Step 1, login **【Main menu】 > 【Network】 > 【Cloud】**, and scan QR-Code to download mobile app (download from mobile phone store is also available)



Step 2, open mobile app, click  to add device (three ways provided to add device: QR-Code Scan, Manual, Local Search), choose QR Code Scan*



Step 3, scan QR code(Remote Access) to add device to mobile application. Enter user name and password to finish adding.

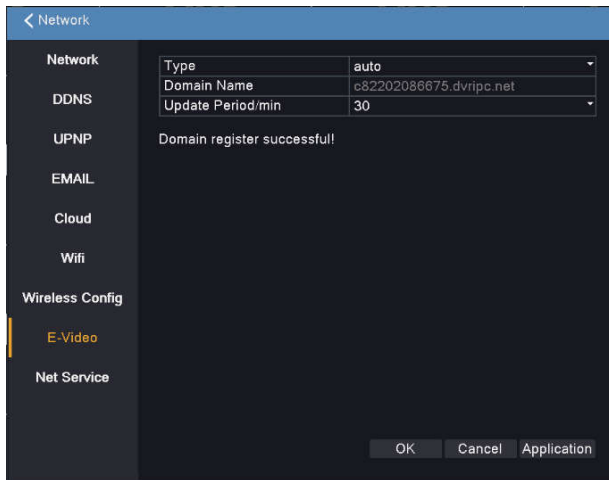
Step 4, You can enjoy the video after device added.

4. E-Video

Open IE browser, input <http://www.dvripc.net>, login web client. If first time use, please install plug-in Active-X control first, and then enter device ID, user name and password to login.



Remark: you can get server domain though **【Main menu】 > 【Network】 > 【 E-Video】 :**



Thank you for reading, if you have any questions please contact us.